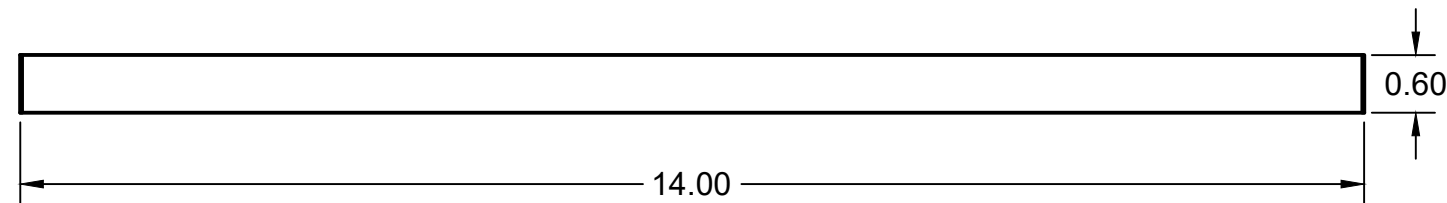
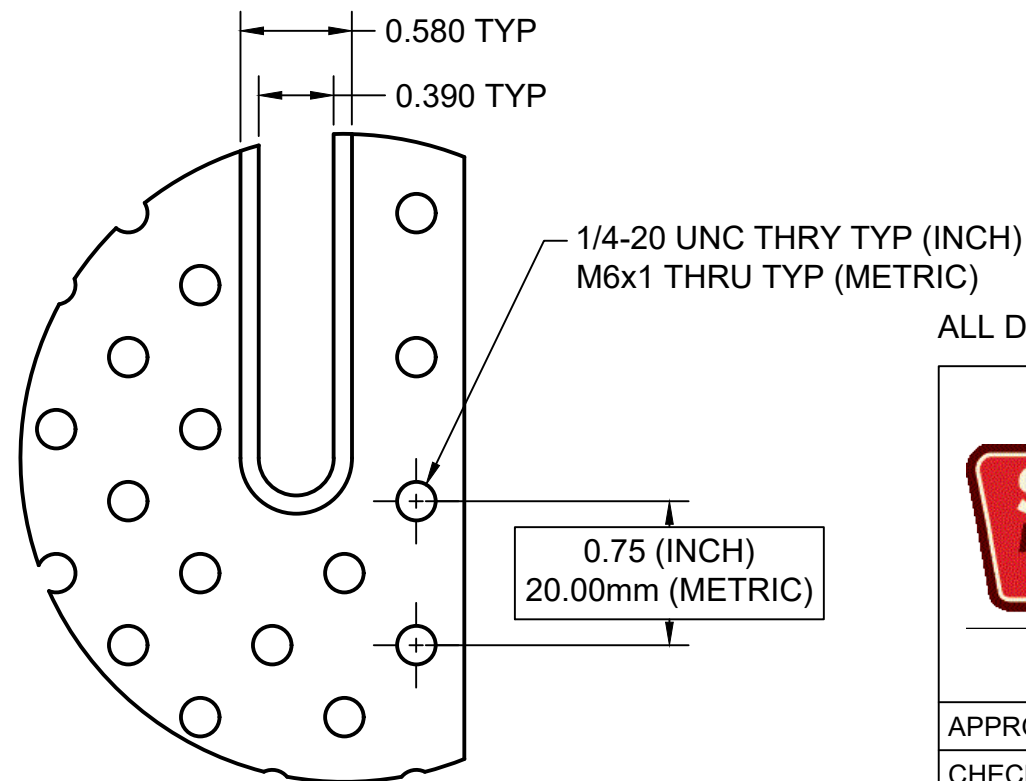



SECTION A-A
SCALE 1:2

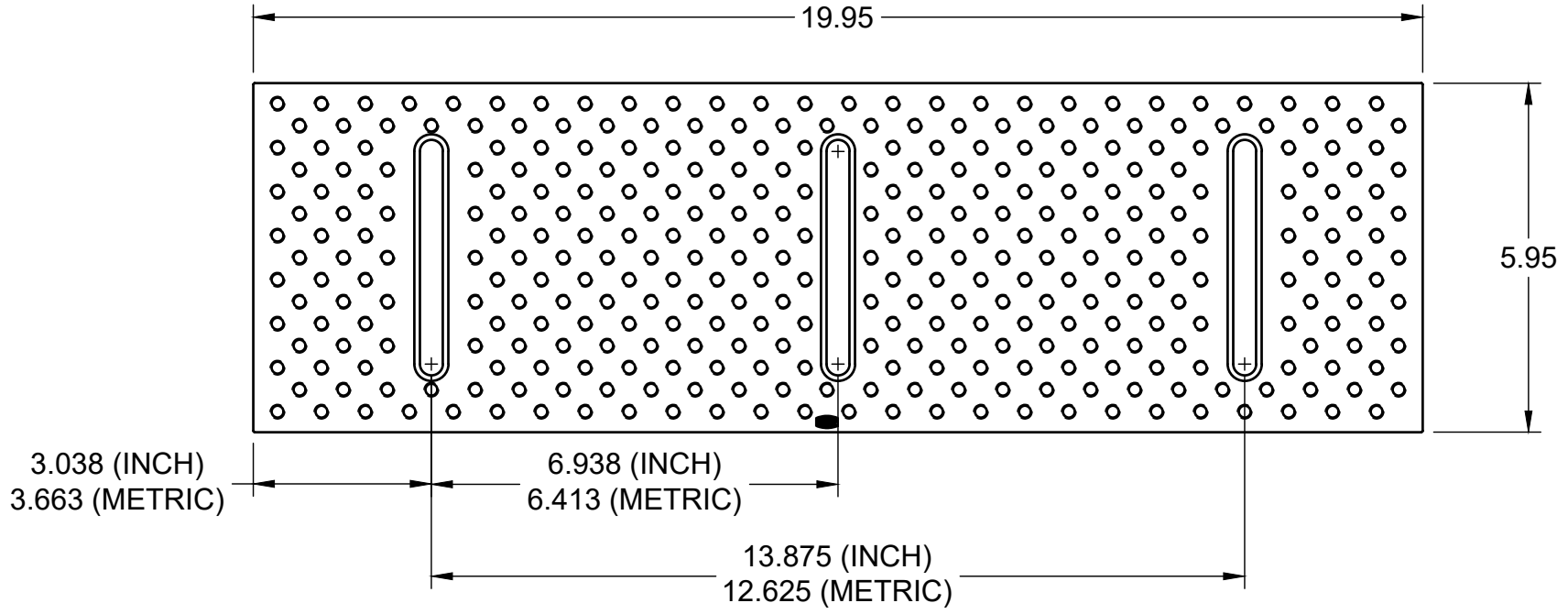


DETAIL B
SCALE 1:1



ALL DIMENSIONS IN INCHES (UNLESS OTHERWISE SPECIFIED)

	PROJECT			REV
	SMW Fixture Plates			
	TITLE			1
	14" x 6" Fixture Plate 6061 Aluminum 1/4" and M6 Plates			
APPROVED	SIZE	CODE	DWG NO	SHEET 1/1
CHECKED	B		S1300 / S1360	
DRAWN Alex Pinson 12/5/2019	SCALE 1:2		WEIGHT	



ALL DIMENSIONS IN INCHES (UNLESS OTHERWISE SPECIFIED).
 DIMENSIONS NOT SPECIFIED MATCH 14X6 PLATE (PREVIOUS SHEET)

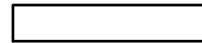
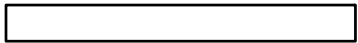
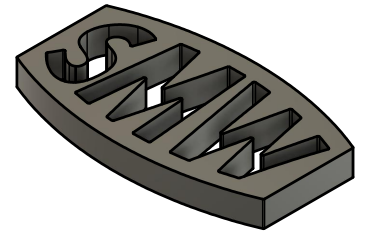
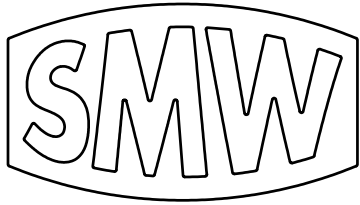


PROJECT
Saunders Machine Works


TITLE
**Universal Fixture Plate (20x6)
 6061 Aluminum**

APPROVED	SIZE	CODE	DWG NO	REV
CHECKED	A		S1070 / S1301	1
DRAWN Alex Pinson 5/1/2023	SCALE 1:8	WEIGHT	SHEET 1/2	

INTERNAL DRAWING - CONFIDENTIAL



ALL DIMENSIONS IN INCHES (UNLESS OTHERWISE SPECIFIED)

	PROJECT			Saunders Machine Works	
	TITLE			Product Name Subtitle	
APPROVED	SIZE	CODE	DWG NO	REV	
CHECKED	A		LEX ID	1	
DRAWN Alex Pinson 5/1/2023	SCALE 5:1	WEIGHT		SHEET 2/2	