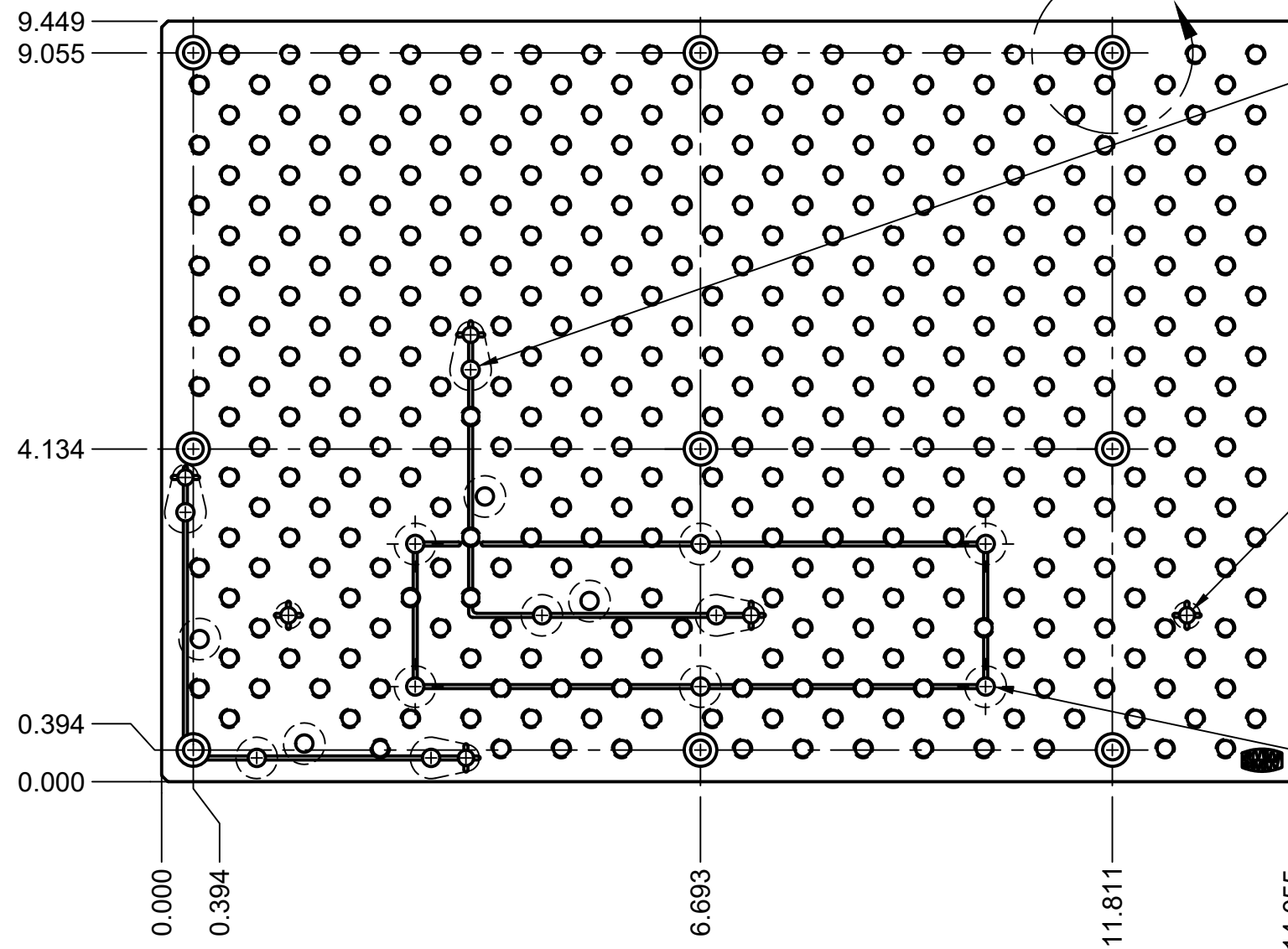


DETAIL A SCALE 2:1



6X THRU BORES FOR L-BRACKETS
(NOTED WITH 'L' ENGRAVING)

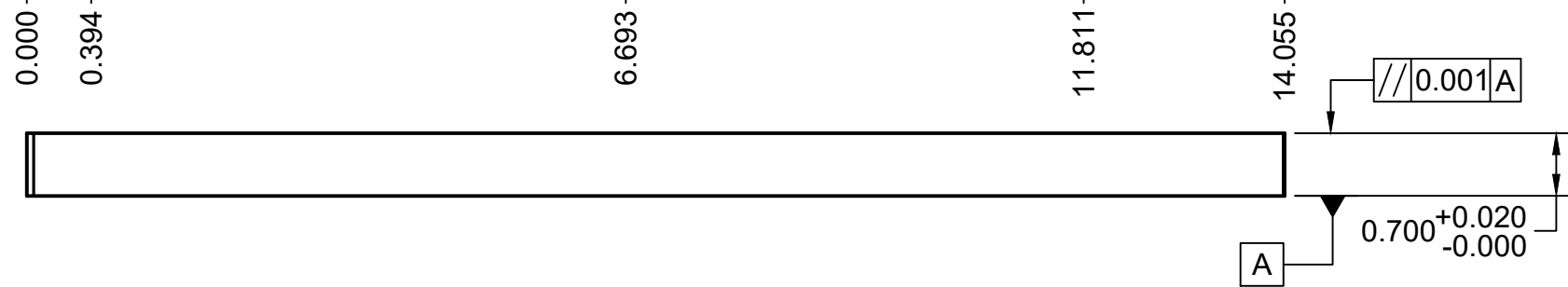
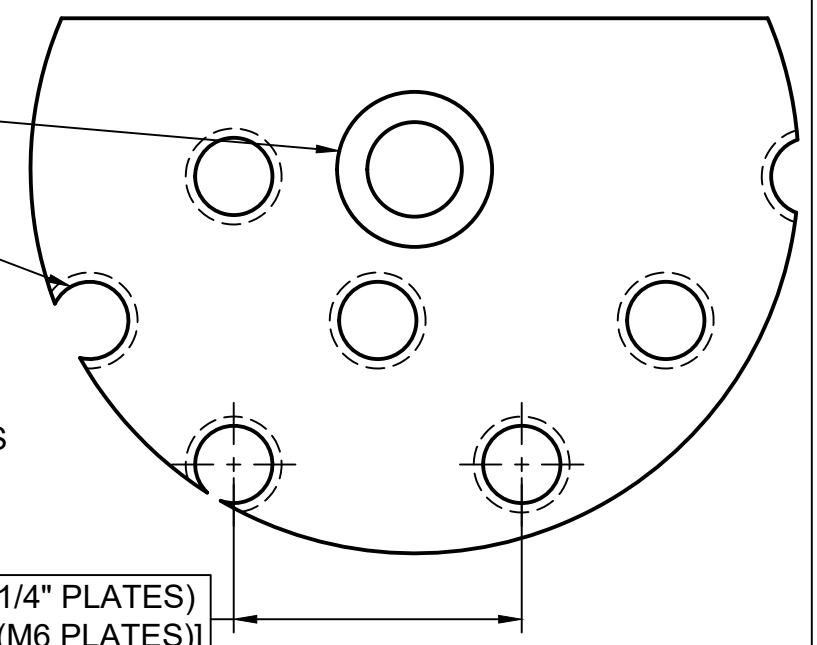
9X FOR M6 SHCS

1/4-20 UNC THRU TYP (1/4" PLATES)
[M6x1.0 THRU TYP (M6 PLATES)]


6X THRU BORES FOR 4MM DOWELS
(NOTED WITH '+' ENGRAVING)

0.750 TYP (1/4" PLATES)
[20mm TYP (M6 PLATES)]

6X THRU BORES FOR MOUNTING 4TH AXIS UNIT
(NOTED WITH RECTANGLE ENGRAVING)



ALL DIMENSIONS IN INCHES (UNLESS OTHERWISE SPECIFIED).
Tolerances not listed subject to specifications on <https://saundersmachineworks.com/pages/fixture-plate-faq>

	PROJECT			REV
	SMW Fixture Plates			
	TITLE			2
	Makera Carvera			
14" x 9.5" 6061 Aluminum Fixture Plate			SIZE	CODE
APPROVED	B		DWG NO	
CHECKED			S1889 S1890	
DRAWN Alex Pinson	2/26/2024	SCALE 1:5	WEIGHT	SHEET 1/1

*INCH PLATE SHOWN