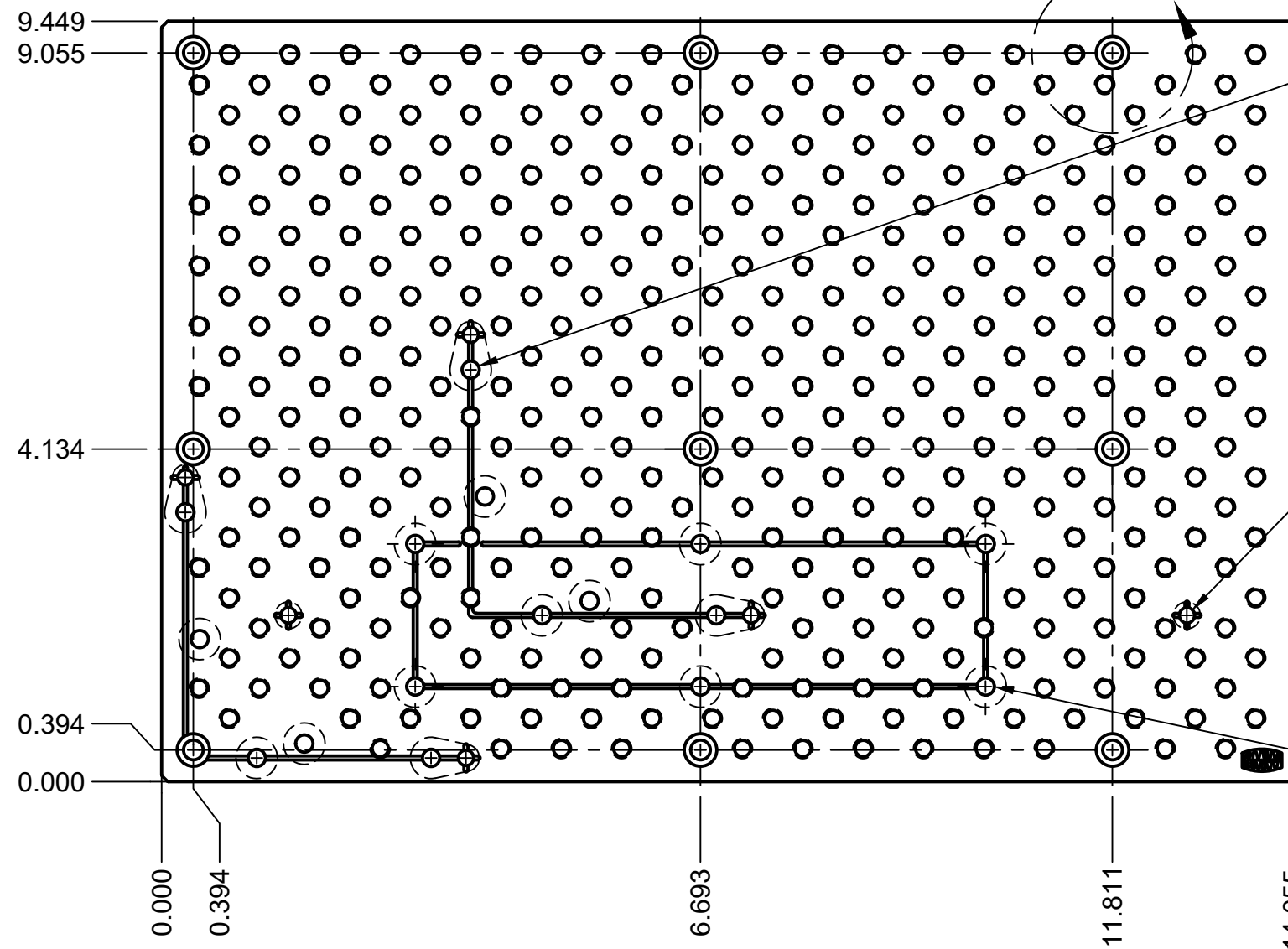


# DETAIL A SCALE 2:1



6X THRU BORES FOR L-BRACKETS  
(NOTED WITH 'L' ENGRAVING)

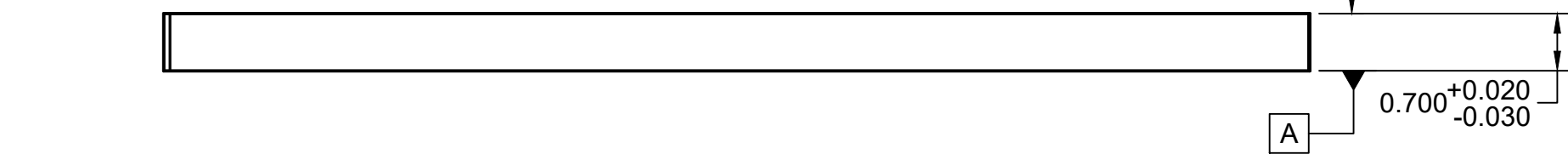
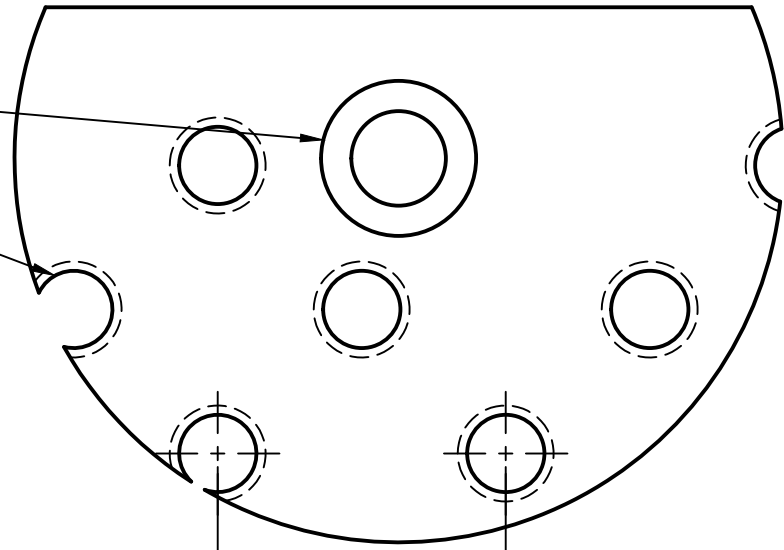
9X FOR M6 SHCS

1/4-20 UNC THRU TYP (1/4" PLATES)  
[M6x1.0 THRU TYP (M6 PLATES)]

6X THRU BORES FOR 4MM DOWELS  
(NOTED WITH '+' ENGRAVING)

0.750 TYP (1/4" PLATES)  
[20mm TYP (M6 PLATES)]

6X THRU BORES FOR MOUNTING 4TH AXIS UNIT  
(NOTED WITH RECTANGLE ENGRAVING)



ALL DIMENSIONS IN INCHES (UNLESS OTHERWISE SPECIFIED).  
Tolerances not listed subject to specifications on <https://saundersmachineworks.com/pages/fixture-plate-faq>



PROJECT <b>SMW Fixture Plates</b>			
TITLE <b>Makera Carvera</b> 14" x 9.5" 6061 Aluminum Fixture Plate			
APPROVED	SIZE	CODE	DWG NO
CHECKED	B		S1889   S1890
DRAWN Alex Pinson 6/11/2024	SCALE 1:5	WEIGHT	SHEET 1/1
			REV 2.1

\*INCH PLATE SHOWN