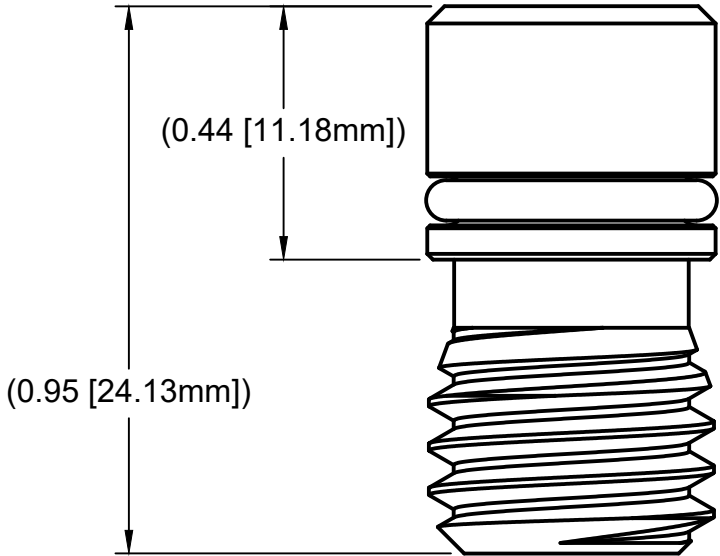
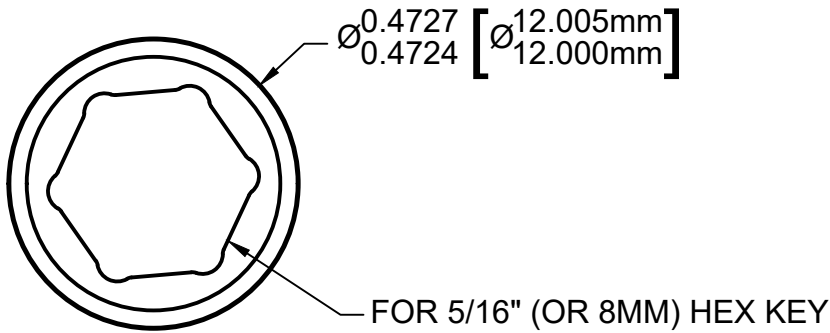


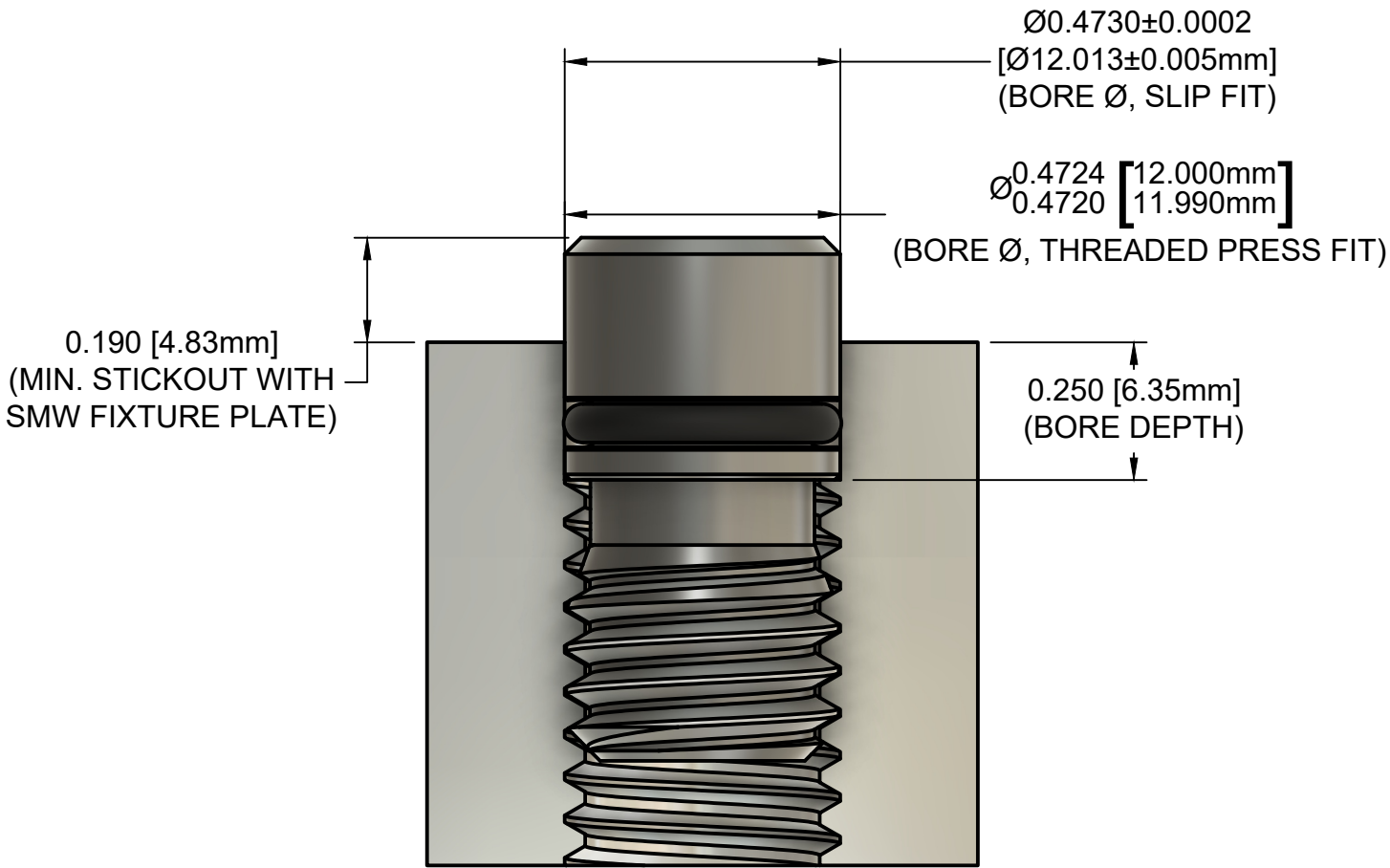
# 12MM FIXTURING PINS

S2029 | S2030  
Round Pin | Diamond Pin

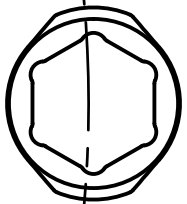
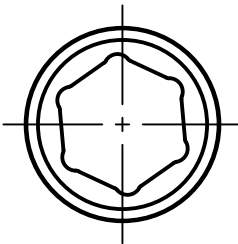
## PRODUCT DIMENSIONS



## RECOMMENDED BORE SPECIFICATIONS



## PROPER DIAMOND ORIENTATION



*When using both round and diamond pins, ensure that the 'points' of the diamond pin fall on the circumference of a circle drawn from the center of the round pin. This allows the diamond pin to provide proper angular location while giving clearance for ease of assembly/removal. Diamond pins should NOT be fully tightened (allowing for proper orientation)*

ALL DIMENSIONS IN INCHES (UNLESS OTHERWISE SPECIFIED).