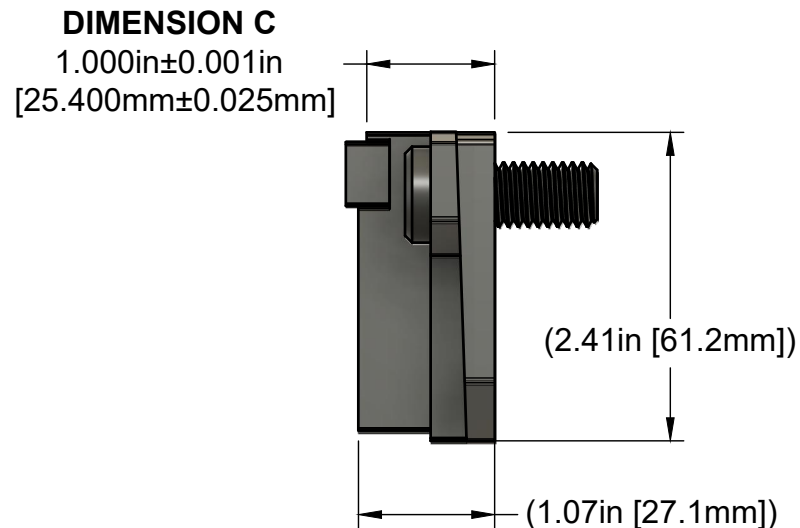
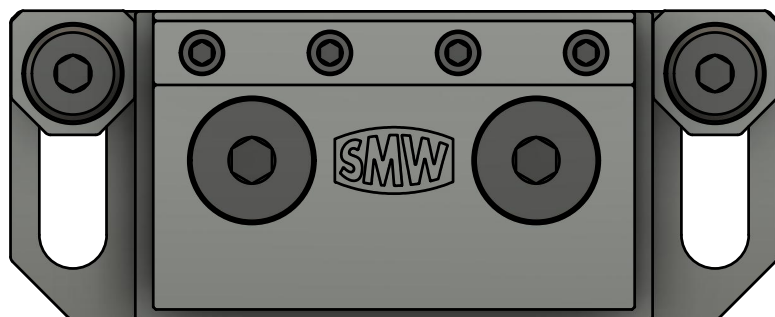
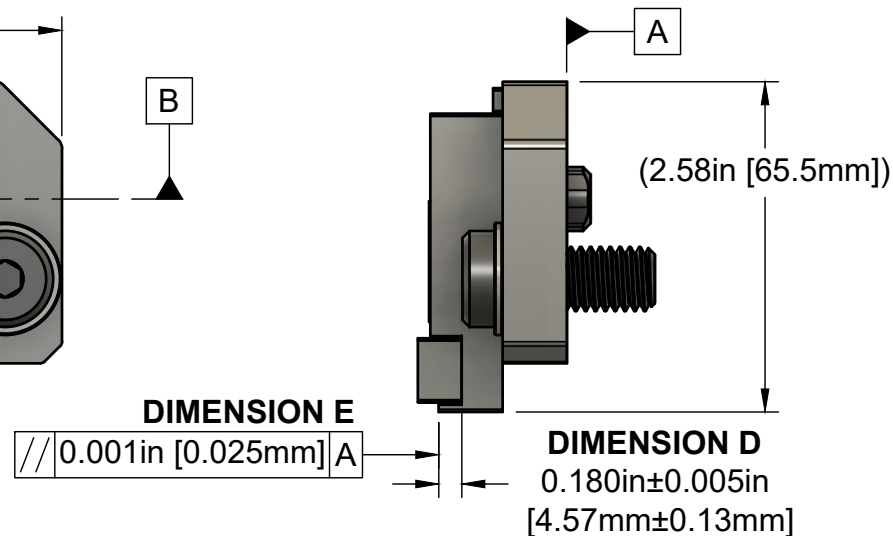
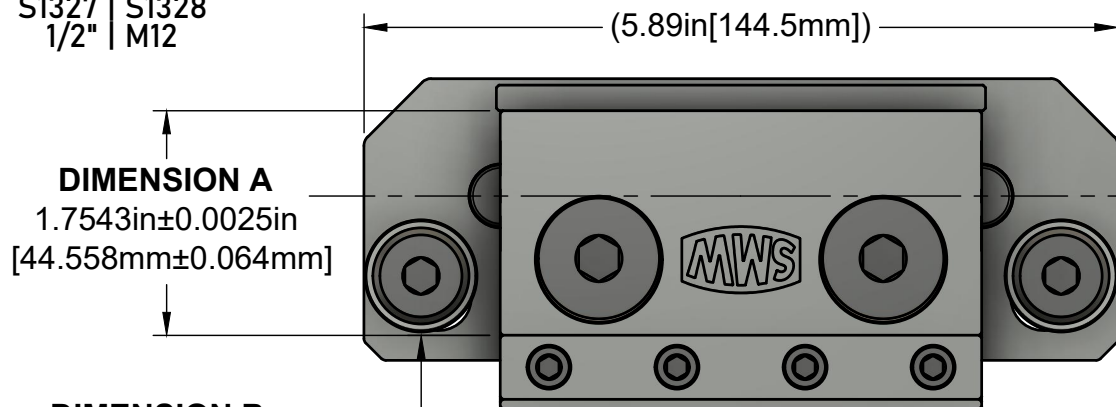


Gen3 Modular Vise

S1327 | S1328
1/2" | M12



KEY:

Dim. A: Controls the jaw alignment when 2+ vises are used side-by-side*

Dim. B: Controls the tram of the vise jaw relative to the fixture plate hole pattern*

Dim. C: This is the height of the built-in parallels above the fixture plate

Dim. D: Sets the max height of the jaw hardware (Reversible Jaw Insert, Castle Grip, etc.) above the built-in parallel

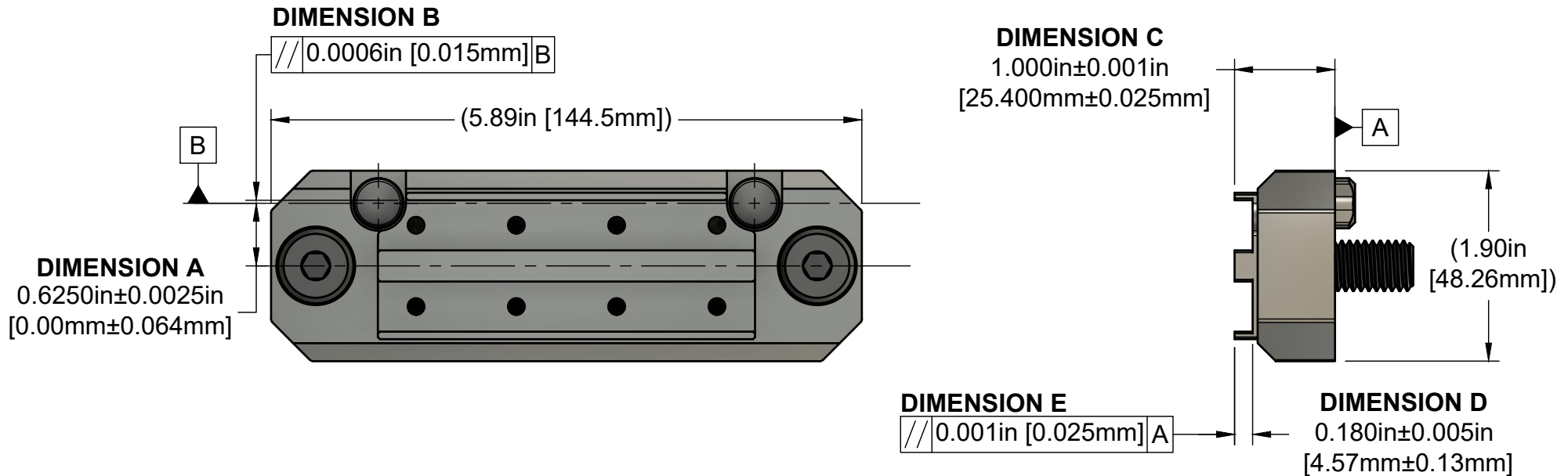
Dim. E: Controls the parallelism of the built-in parallel to the top of the fixture plate

*These tolerances subject to minor differences in alignment pin & fixture plate hole fit. For best results vise should be pushed back when tightening to ensure both pins are touching the back side of the subplate bore.



Gen3 Modular Vise (Dual Station)

S1247 | S1248
1/2" | M12



KEY:

Dim. A: Controls the jaw alignment when 2+ vises are used side-by-side*

Dim. B: Controls the tram of the vise jaw relative to the fixture plate hole pattern*

Dim. C: This is the height of the built-in parallels above the fixture plate

Dim. D: Sets the max height of the jaw hardware (Reversible Jaw Insert, Castle Grip, etc.) above the built-in parallel

Dim. E: Controls the parallelism of the built-in parallel to the top of the fixture plate

**These tolerances subject to minor differences in alignment pin & fixture plate hole fit. For best results vise should be pushed back when tightening to ensure both pins are touching the back side of the subplate bore.*

SEE FIRST PAGE FOR ADJUSTABLE SIDE DIMENSIONS, WHICH MATCH THE SINGLE STATION VISE.