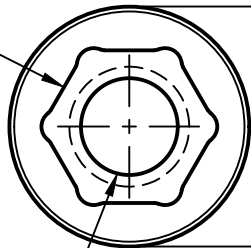


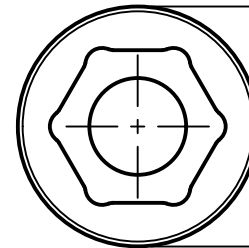


5/16" (8mm) HEX

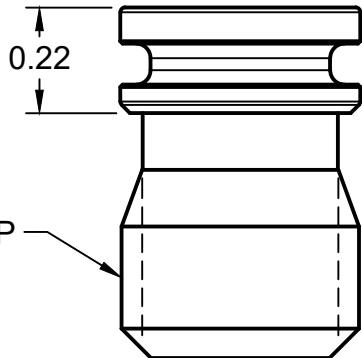


$\text{Ø}0.500^{+0.000}_{-0.002}$
(NON-LOCATING)

1/4-20 UNC ∇ 0.40 (MIN) TYP

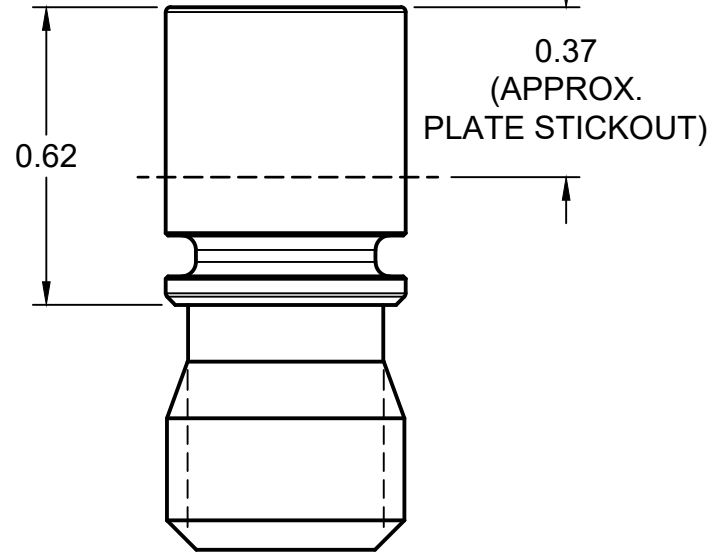


$\text{Ø}0.5000^{+0.0002}_{-0.0000}$
(LOCATING)



0.22

1/2-13 UNC TYP



0.62

0.37
(APPROX.
PLATE STICKOUT)

ALL DIMENSIONS IN INCHES (UNLESS OTHERWISE SPECIFIED).



PROJECT

SMW Fixturing Pins

TITLE

Thread Adapter Pins
Locating & Non-Locating Pins
1/2-13 to 1/4-20 Adapters

APPROVED

CHECKED

DRAWN

Alex Pinson

01/06/2025

SIZE

A

CODE

DWG NO

S1845 | S1846

REV

1.2

SCALE 5:2

WEIGHT

SHEET 1/1

